

The background of the entire image is a dramatic landscape. A long, straight road with a dashed white line down the center stretches from the bottom foreground into the distance. The road is flanked by dry, grassy fields. The sky is filled with dark, heavy clouds, and several bright, jagged lightning bolts are visible, some striking the ground. The sun is partially obscured by the clouds, creating a bright, hazy glow in the center of the sky. The overall mood is one of urgency and warning.

OUR GREATEST
THREAT

CLIMATE CHANGE

HOW CAN WE PROTECT OUR FUTURE?

CLIMATE CHANGE CAUSES EXTREME WEATHER



FREEZING

WINTERS



DEEPER

FLOODS



SCORCHING

WILDFIRES



SURGING

STORMS



WE CAN AND MUST PROTECT OUR FUTURE



THE NEXT GENERATION DEPENDS
ON US TO PREVENT IRREVERSIBLE
DAMAGE TO OUR PLANET.





**JOHN
FETTERMAN**



**SUSAN
WILD**



TAKING ON THE CLIMATE CRISIS NOW



They know climate change is a real, existential threat to Pennsylvania, our nation, and our world. That's why they are champions for legislation to protect our planet and our future.



They supported Democrats' plan to jumpstart clean energy and make our energy infrastructure safer and better able to handle the impacts of extreme weather like wildfires, droughts, hurricanes, and floods.

JOHN FETTERMAN

&

SUSAN WILD

SUPPORTED
DEMOCRATS'
CLIMATE
CHANGE PLAN

THAT PUTS OUR NATION ON THE PATH TO:

cutting pollution
nearly in half
by 2030

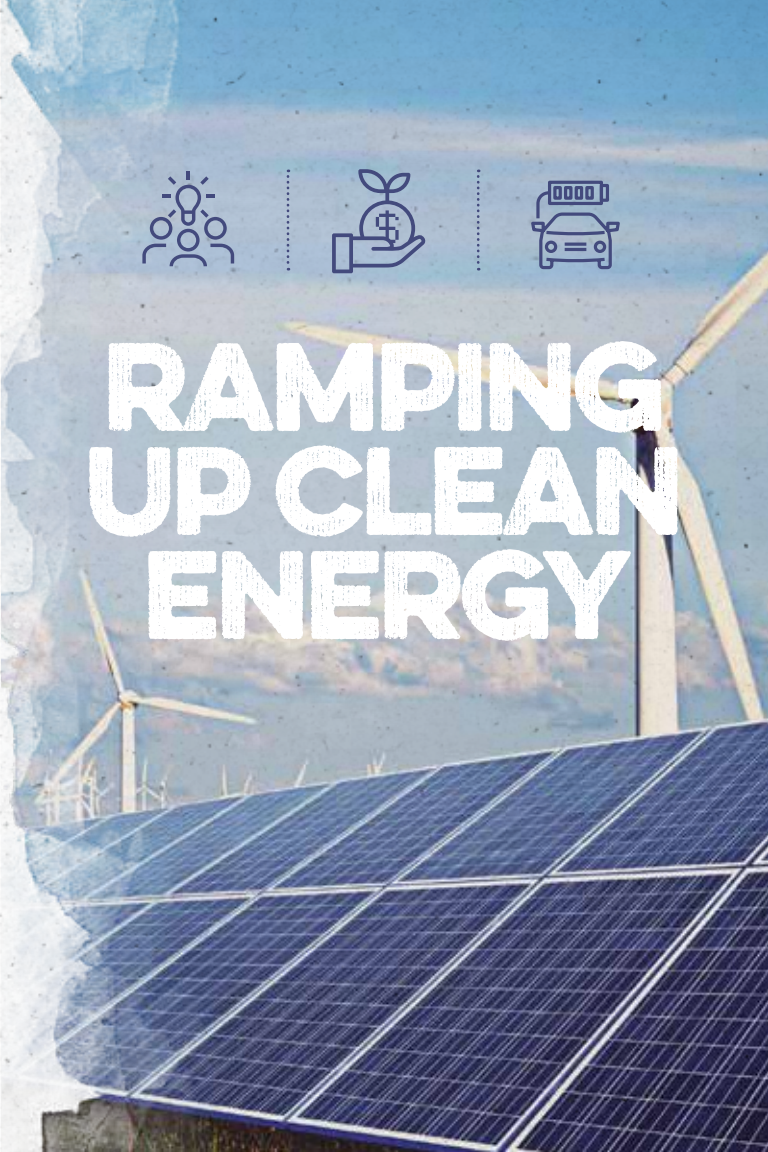
creating millions of
good paying jobs

reducing
energy bills
for working
families

moving past
our dangerous
dependency
on fossil fuels



**RAMPING
UP CLEAN
ENERGY**



we can elect

LEADERS
WHO ARE
PROTECTING
OUR FUTURE

FROM CLIMATE CHANGE IMPACTS

VOTE

Tuesday
Nov. 8

FETTERMAN
FOR US SENATE



WILD
FOR CONGRESS

THE LEADERS
WE NEED TO
TAKE ACTION
ON CLIMATE

Paid for by Climate Power Action, www.climatepoweraction.us, and not authorized by any candidate or candidate's committee.

