

The background of the entire image is a dramatic landscape. A long, straight road with a dashed white line down the center stretches from the bottom foreground into the distance. The road is flanked by dry, grassy fields. The sky is filled with dark, heavy clouds, and several bright, jagged lightning bolts are visible, striking down from the clouds. The sun is partially obscured by the clouds, creating a bright, hazy glow in the center of the sky.

OUR GREATEST  
THREAT

# CLIMATE CHANGE

HOW CAN WE PROTECT OUR FUTURE?

# CLIMATE CHANGE CAUSES EXTREME WEATHER



FREEZING

WINTERS



DEEPER

FLOODS



SCORCHING

WILDFIRES



SURGING

STORMS





# WE CAN AND MUST PROTECT OUR FUTURE



THE NEXT GENERATION DEPENDS  
ON US TO PREVENT IRREVERSIBLE  
DAMAGE TO OUR PLANET.





REP.

**SHARICE  
DAVIDS**

# TAKING ON THE CLIMATE CRISIS NOW



**She knows climate change is a real, existential threat** to Kansas, our nation, and our world. That's why she is a champion for legislation to protect our planet and our future.



**She delivered a plan** to jumpstart clean energy and make our energy infrastructure safer and better able to handle the impacts of extreme weather like wildfires, droughts, hurricanes, and floods.



REP.

# SHARICE DAVIDS

## PASSED A CLIMATE CHANGE PLAN

THAT PUTS OUR NATION ON THE PATH TO:

cutting pollution  
nearly in half  
by 2030

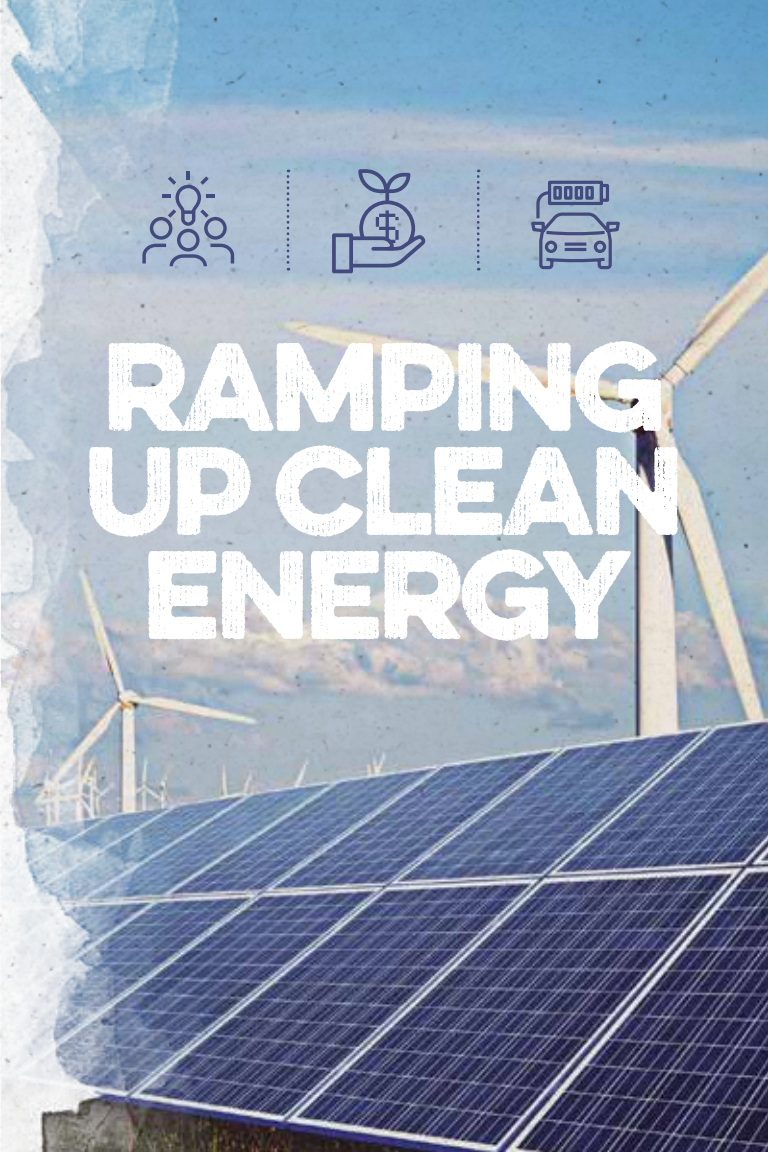
creating millions of  
good paying jobs

reducing  
energy bills  
for working  
families

moving past  
our dangerous  
dependency  
on fossil fuels



# RAMPING UP CLEAN ENERGY



*we can elect*

LEADERS  
WHO ARE  
PROTECTING  
OUR FUTURE

FROM CLIMATE CHANGE IMPACTS

**VOTE**

Tuesday  
Nov. 8



*REP.*

**SHARICE  
DAVIDS**

*for US Congress*

THE LEADER  
WE NEED TO  
TAKE ACTION  
ON CLIMATE

Paid for by Climate Power Action, [www.climatepoweraction.us](http://www.climatepoweraction.us), and not authorized by any candidate or candidate's committee.

